

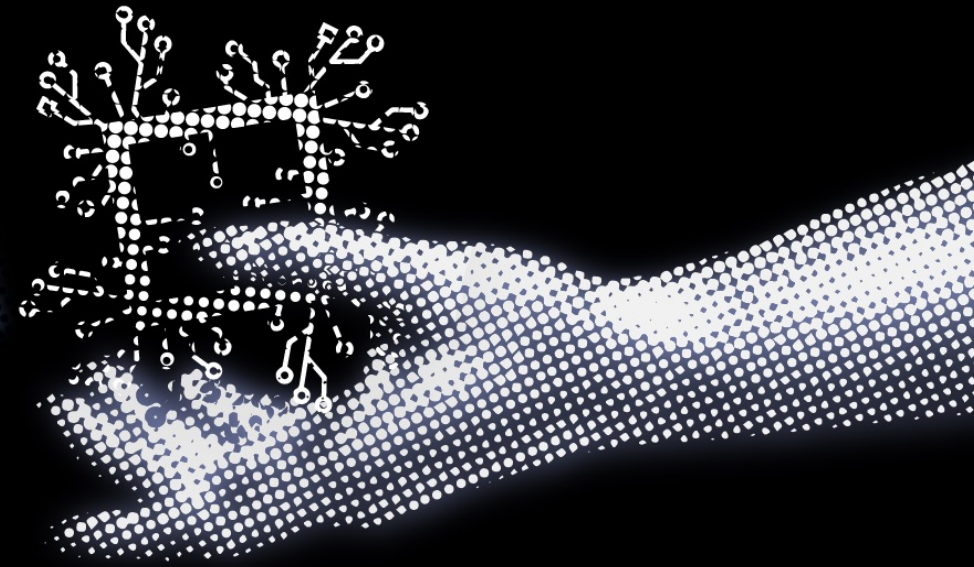
April 30<sup>th</sup>, 2024



evolvED

# CATALYSTS CREATIVITY CONNECTION

GBC'S Annual  
Teaching & Learning Conference



# Use of Climate Solutions Simulation as an Education Tool

Kay-Ann Williams PhD.





# Land Acknowledgment

George Brown College is located on the traditional territory of the Mississaugas of the Credit First Nation and other Indigenous peoples who have lived here over time.

We are grateful to share this land as treaty people who learn, work and live in the community with each other.

[Learn more about our land acknowledgement](#)

# PURPOSE

## CONTEXT

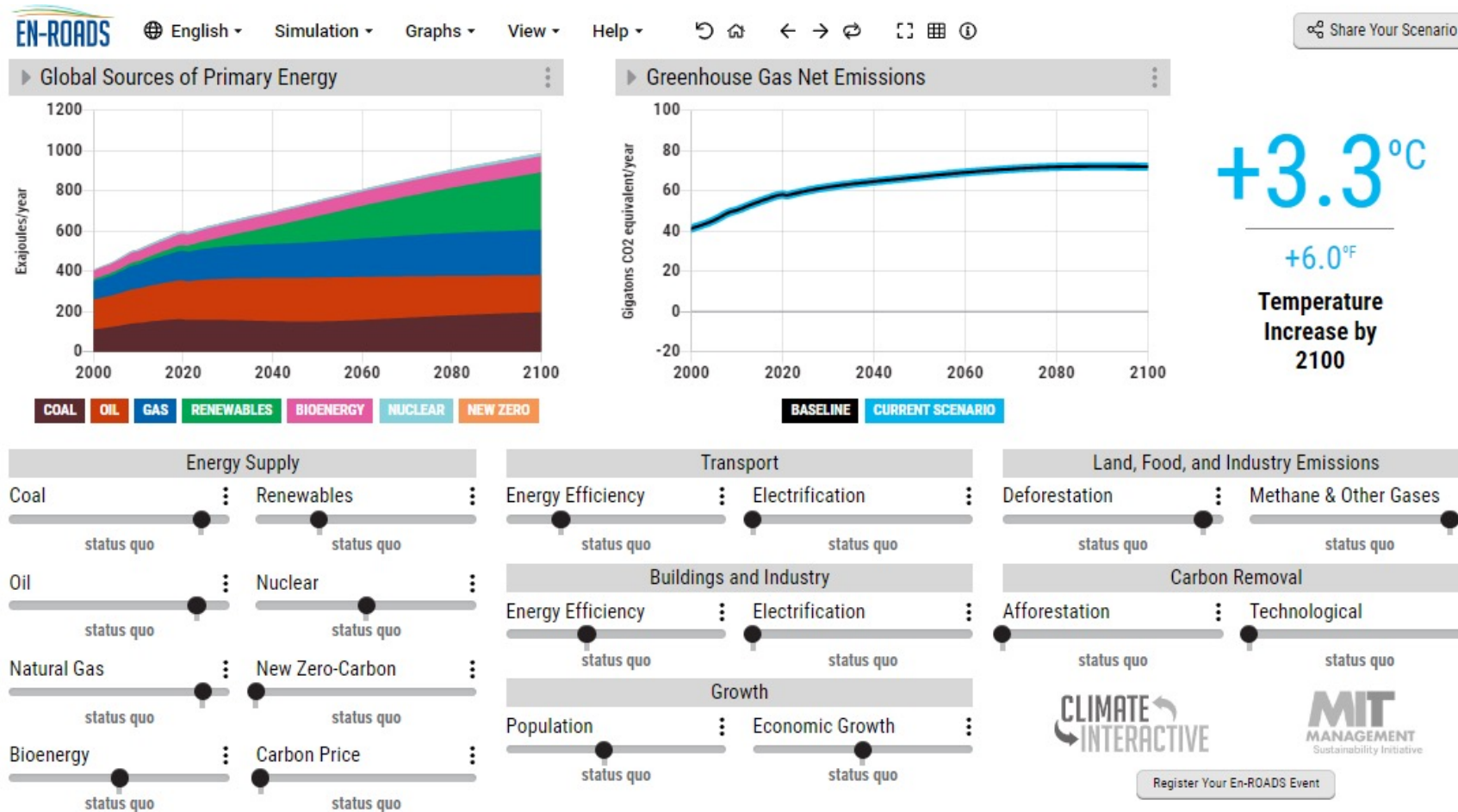
- Students are expected to hold essential skills for the workplace.
- These may include: critical thinking, communication both verbally and written and teamwork

## AGENDA

- Share the EN-ROADS Climate Solutions Simulator as a tool to understand the complexities of the climate crisis and the variety of solutions available
- Discuss experiences in the classroom and possibilities for meeting some employability skills



# EN-ROADS SIMULATOR



EN-ROADS Solutions Simulator has been developed by Climate Interactive, MIT Sloan Sustainability Initiative and Ventana Systems.

- [EN ROADS Simulator](#)

# PROCESS

En-ROADS Assignment: Simulating Climate Futures



## Assignment: Simulating Climate Futures in En-ROADS

In this assignment, you will work with the En-ROADS simulation model developed by Climate Interactive and MIT Sloan Sustainability Initiative to create a scenario that can mitigate global warming to the internationally agreed target of less than 2°C, and ideally 1.5°C. In addition, you will consider the economic, political, and social issues relevant to successful implementation of your policies.

### Your Steps

1. **Open En-ROADS** at [en-roads.climateinteractive.org/](https://en-roads.climateinteractive.org/). Review these resources to help you understand how to use this model:
  - o [En-ROADS Overview and Introduction](#)
  - o [One Page Guide to the En-ROADS Control Panel](#)
2. **Develop a scenario to meet your goals.** Use En-ROADS to develop your vision of how to successfully limit global warming to less than 2°C—and ideally 1.5°C—per the Paris Agreement. Ensure your scenario factors in the goals listed below.
3. **Submit a writeup expressing your vision.** After developing your preferred scenario, write a thoughtful and concise response to the questions below. Develop your vision and approach on the issues. Instructions on how to format your writeup are at the end of this document.
4. **Create PowerPoint Presentation of the write-up for presentation in class.**

# Assignment: Simulating Climate Futures in En-ROADS

In this assignment, you will work with the En-ROADS simulation model developed by Climate Interactive and MIT Sloan Sustainability Initiative to create a scenario that can mitigate global warming to the internationally agreed target of less than 2°C, and ideally 1.5°C. In addition, you will consider the economic, political, and social issues relevant to successful implementation of your policies.

## Your Steps:

1. Open En-ROADS at [en-roads.climateinteractive.org](https://en-roads.climateinteractive.org). Review these resources to help you understand how to use this model:
  - o En-ROADS Overview and Introduction
  - o One Page Guide to the En-ROADS Control Panel.
2. Develop a scenario to meet your goals. Use En-ROADS to develop your vision of how to successfully limit global warming to less than 2°C-and ideally 1.5°C-per the Paris Agreement. Ensure your scenario factors in the goals listed below.
3. Submit a writeup expressing your vision. After developing your preferred scenario, write a thoughtful and concise response to the questions below.  
Develop your vision and approach on the issues. Instructions on how to format your writeup are at the end of this document.
4. Create PowerPoint Presentation of the write-up for presentation in class.

# RESPONSES/OUTCOMES

- Collaborate and share ideas – understand that there are a number of ways to solve a major problem such as the climate crisis.
- Exposure to optimism - Students are able to make connections between solutions and economic growth potential; tendency to be distressed by sound bites in social media.
- Opportunity to apply solutions/ideas to their own countries.
- Recognize the importance of public policy and implementation.





QUESTIONS

# RESOURCES

- Durable Skills - <https://www.ontario.ca/page/essential-employability-skills>
- EN-ROADS Climate Simulator - <https://en-roads.climateinteractive.org/scenario.html?v=24.4.0>
- Essential Employability Skills - <https://www.ontario.ca/page/essential-employability-skills>

# Conference Schedule

Description	Time
Registration/Coffee/Breakfast	8:00 am - 9:00 am
Opening Remarks	9:00 am - 9:20 am
Keynote 1 - Dr. Rhonda McEwen	9:20 am - 10:30 am
Session Block 1	10:40 am - 11:40 am
Session Block 2 - 20 min	11:50 am - 12:10 pm
Lunch	12:10 pm - 1:00 pm
Keynote 2 - Dr. Ioana Literat	1:00 pm - 2:00 pm
Session Block 3	2:10 pm - 3:10 pm
Concluding Ceremonies	3:10pm - 4:00 pm

# THANK YOU

