



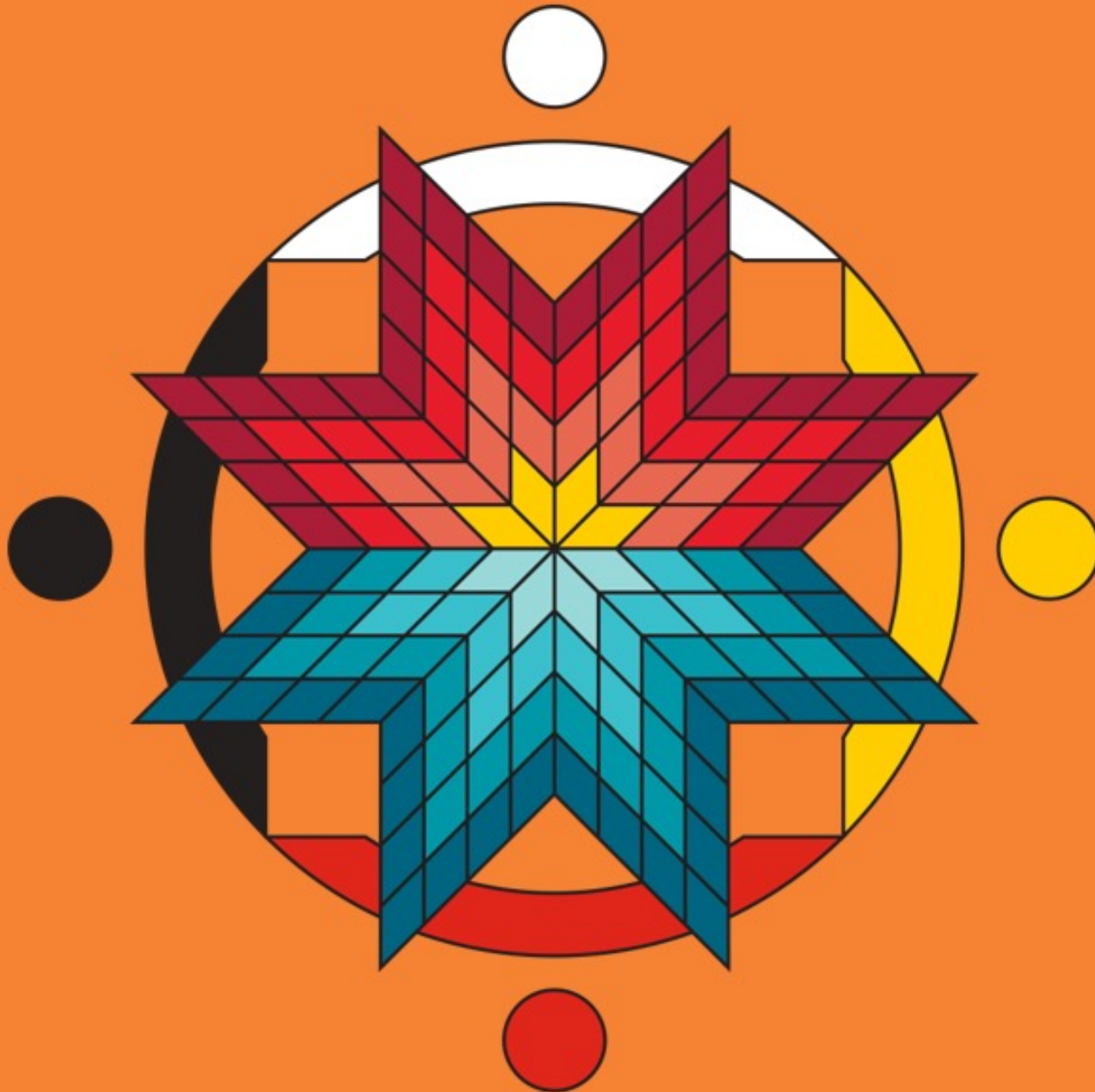
TEACHING &  
LEARNING  
EXCHANGE

evolvED

# Research & Innovation: Learning Beyond The Classroom

Research & Innovation Team





## LAND ACKNOWLEDGEMENT

George Brown College is located on the traditional territory of the Mississaugas of the Credit First Nation and other Indigenous peoples who have lived here over time.

We are grateful to share this land as treaty people who learn, work and live in the community with each other.

[Learn more about our land acknowledgement.](#)



June 29, 2023



# AGENDA

1. Panel Introduction.
2. Overview.
3. Program Areas – examples:
  - Ignite programs.
  - Mitacs Programs.
  - Product Development Exchange.
4. Faculty Perspective.
5. Student Perspective.
6. Table Discussions and Feedback.

# PANEL INTRODUCTIONS



**STEFFANIE ADAMS**  
FACULTY



**ALEXANDRA HERNANDEZ**  
PROGRAM MANAGER,  
REB & INTERNAL PROGRAMS



**ROD MISSAGHIAN**  
PROGRAM MANAGER,  
MITACS PROGRAMS



**RYAN BILLINGER**  
PROGRAM MANAGER,  
PRODUCT DEVELOPMENT EXCHANGE



**JAMES MATSUOKA**  
STUDENT

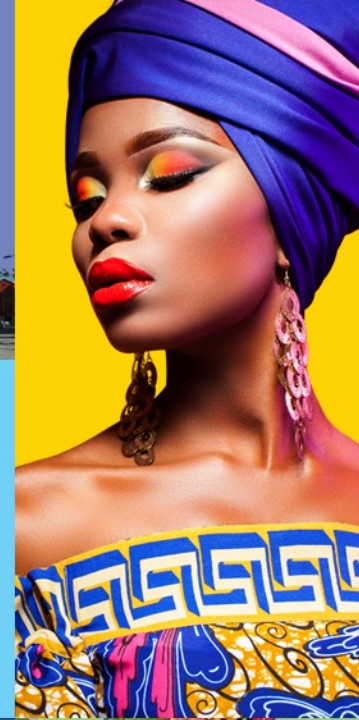


**EVA ABOAGYE**  
SENIOR PROGRAM MANAGER

# 15 YEARS OF EXCELLENCE

In 2022/2023:

- 96 partners.
- 110 collaborative projects.
- 871 student research experiences.
- Over 220 employees.



**\$97M**  
RESEARCH  
FUNDING

**1,822**  
RESEARCH  
PARTNERSHIPS

**17,065**  
STUDENT RESEARCH  
EXPERIENCES

**2,753**  
PROTOTYPES

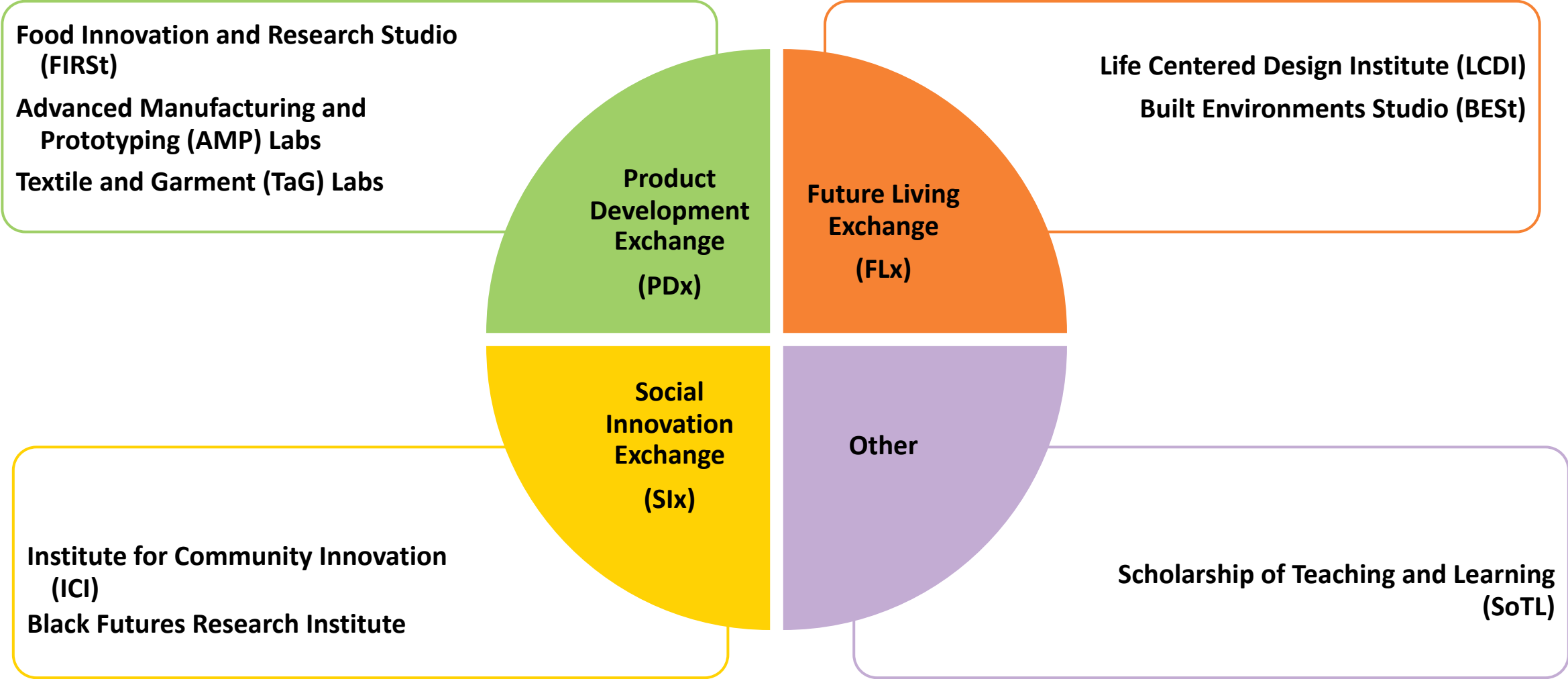


**847**  
NEW and IMPROVED  
PRODUCTS

**377**  
NEW and IMPROVED  
PROCESSES



# RESEARCH & INNOVATION PROGRAM AREAS



**IGNITE YOUR AMBITION.  
EXPLORE YOUR QUESTIONS.  
EXCHANGE YOUR FINDINGS.**

**The IGNITE/SIG Funds.**

**IGNITE YOUR AMBITION.  
EXPLORE YOUR QUESTIONS.  
EXCHANGE YOUR FINDINGS.**

# IGNITE/SIG FUNDS



## SSHRC Institutional Grants (SIG) Explore Fund

Max award of \$2,000

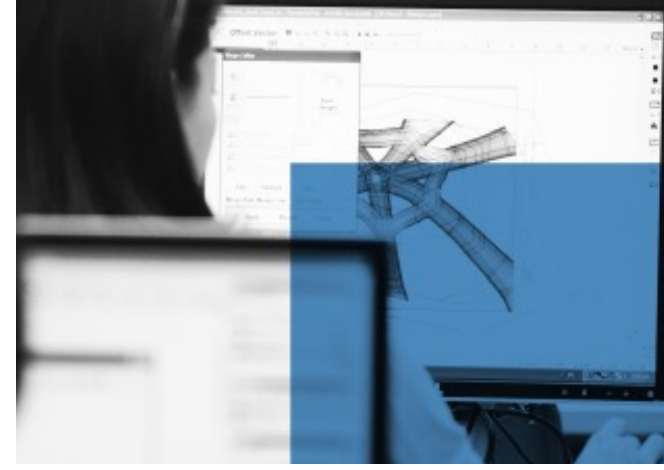
**PURPOSE:** provides support for GBC Social Sciences and Humanities researchers at any stage of their careers to explore early-stage research and pilot innovative research ideas, contribute to professional development by hiring students, and ultimately develop high-quality SSHRC funded proposals.



## SSHRC Institutional Grants (SIG) Exchange Fund

Max award of \$1K domestic; \$1.5K international

**PURPOSE:** provides support for GBC Social Sciences and Humanities researchers to exchange results by supporting knowledge mobilization activities, including workshops or seminars, encourage collaboration, support conference presentations.



## GBC – IGNITE Fund

Up to \$15,000 per project

**PURPOSE:** provides support for GBC researchers to engage in original research and innovation activities, build research skills and capacity, and ultimately pursue external funding opportunities.

**CALL IS CURRENTLY OPEN**



# HOW TO APPLY FOR IGNITE/SIG RESEARCH FUNDS

## ITEM

Application materials can be found at  
[georgebrown.ca/ignite](https://georgebrown.ca/ignite)

Example: Dr. Steffanie Adams | The Silent Community: A Case Study in Indigenous Cultural & Heritage Preservation using 3D and Laser scanning and surveys in the Ottawa Valley (IGNITE funded)

Applied for budget to pay student researchers, PI time, some materials, conference presentation/travel fees, etc.

COMPLETE  
APPLICATION

IGNITE & SIG  
COMMITTEE  
REVIEWS  
APPLICATIONS

DECISION  
COMMUNICATED

# THE MITACS PROGRAM



# MITACS VALUE CREATION MODEL

## Mitacs can...

Build new skills for students leading to increased employability.

Create enhanced work-integrated learning opportunities.

Open the door to multidisciplinary and untraditional partnerships.

Forge industry connections, as well as to other funding opportunities.

Gain access to new industry and community partners.

Strengthen your R&D capacity.

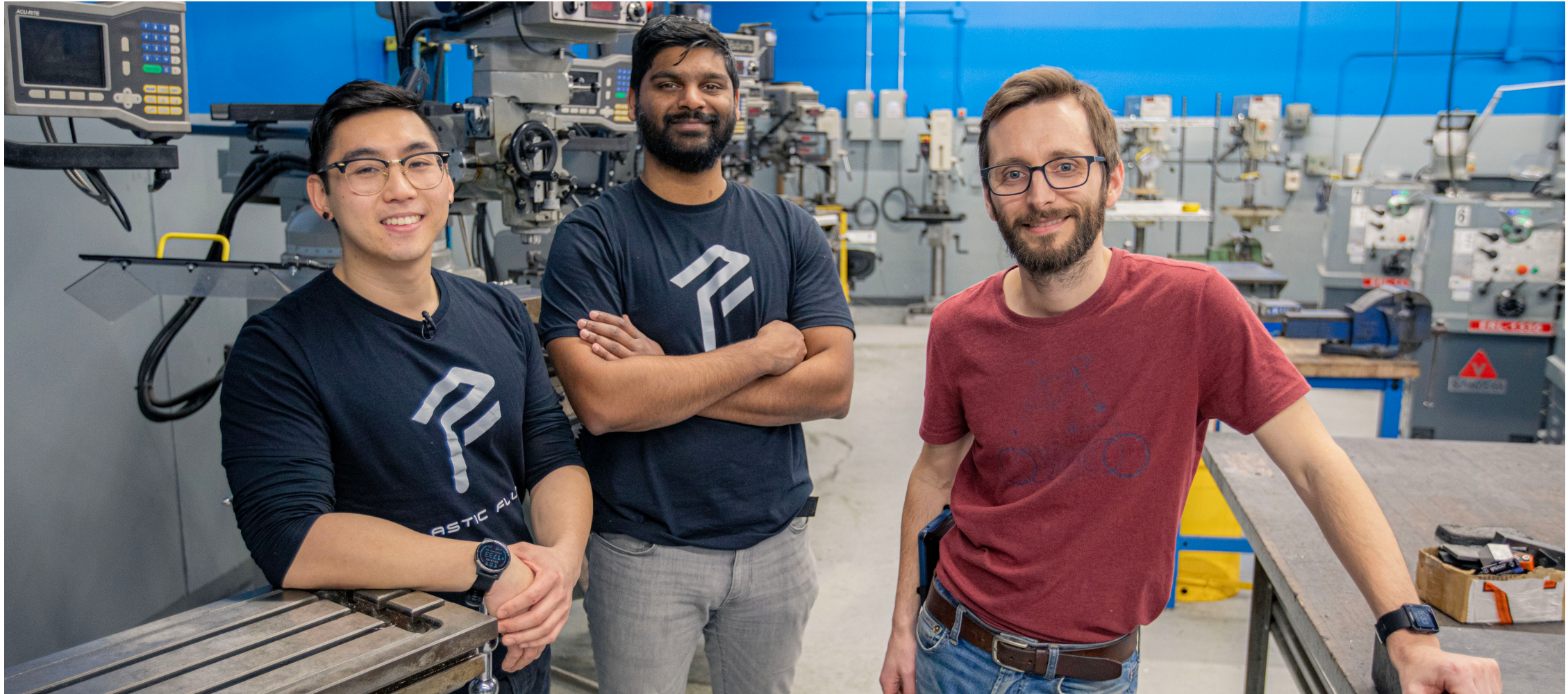
The Mitacs logo features a blue circle above the letter 'i' in 'Mitacs', which is written in a bold, blue, sans-serif font.

# HOW MITACS WORKS

Mitacs funding puts talent to work with a paid internship at an organization that needs college expertise. Funding starts at \$15,000, and your partner organization's financial contribution starts at \$7,500.

| THE MATCH  | THE PROPOSAL  | THE PROJECT  |
|--|---|--|
| A student, a supervising professor, and a partner organization develop a research project. | Applicants submit a <a href="#">proposal</a> via a Mitacs representative. | Projects receive \$15,000 in funding for each four-month internship. |

# PRODUCT DEVELOPMENT EXCHANGE (PDx)



# PDx

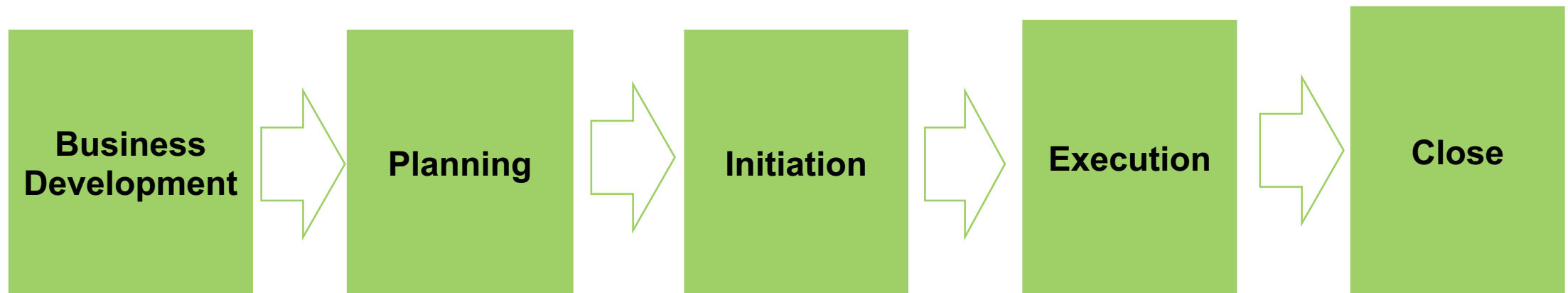
The Product Development Exchange (PDx) is an industry-focused applied research exchange connecting small-to medium-sized enterprises (SMEs) and entrepreneurial start-ups within Ontario to technical expertise (faculty) and advanced manufacturing equipment.

**Our projects are faculty lead and leverage expertise within GBC.**



# PDx PROJECT STRUCTURE

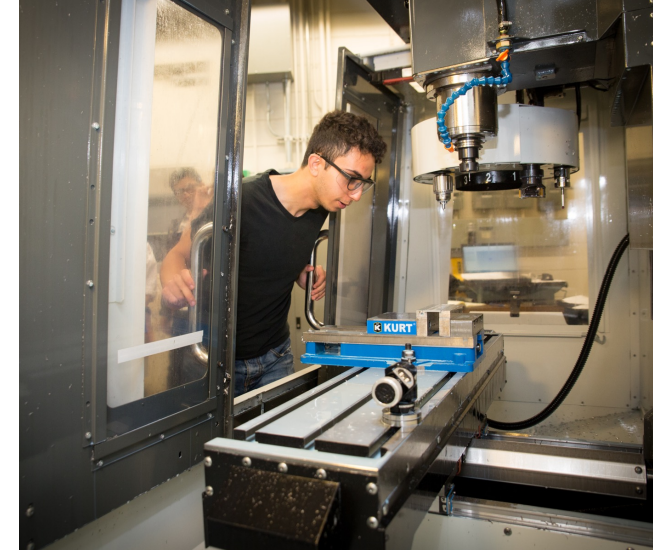
Currently, there is not a one stop shop in the GTA providing professional and industry focused applied research services that support the early-stage experimental development of new product concepts through rapid and iterative prototype design, fabrication and assessment.



# PDX – Details

## Research Topics:

1. Iterative product design.
2. Mechanical Design.
3. Embedded electronics.
4. Finite Element Analysis.
5. Product testing and validation.
6. Marketing strategies and gap analysis.



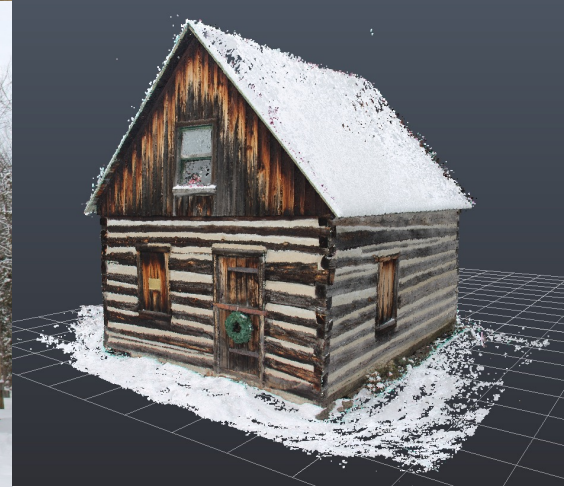
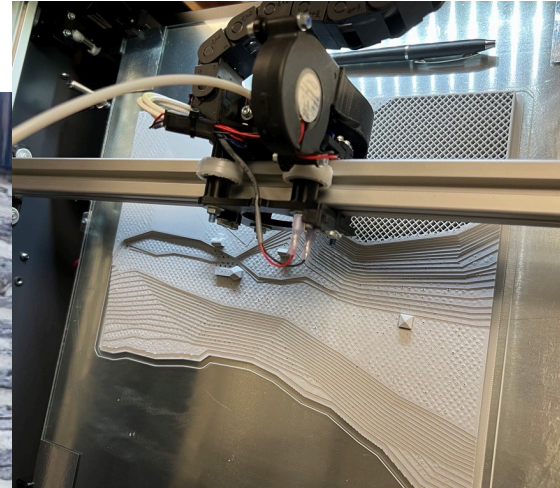


# FACULTY PERSPECTIVE

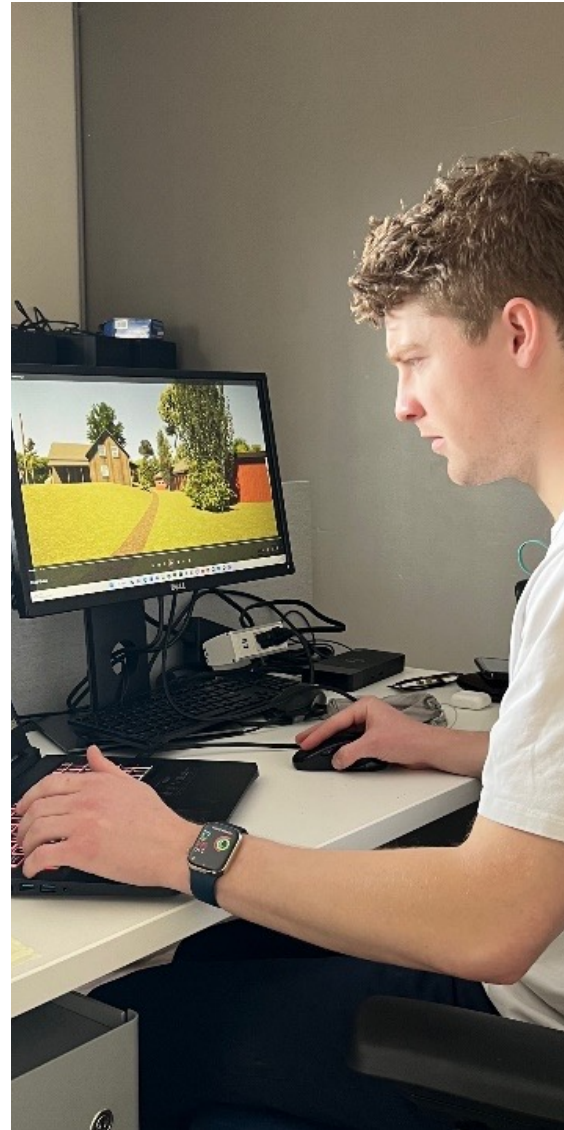


# THE SILENT COMMUNITY

A Case Study in Indigenous Cultural & Heritage Preservation using 3D and Laser scanning and surveys in the Ottawa Valley.



# RESEARCH: A GREAT OPPORTUNITY FOR STUDENTS



- Students gain hands-on experience completing a research or creative project.
- Develop their leadership and teamwork skills as they must collaborate with others.
- Learn valuable life skills such as professionalism, time management, learning how to use online research tools.
- Learn to effectively communicate ideas and how to analyze and critique the work of others.
- Learn about the planning of experiments, writing grants and how to report findings.
- These projects often lead to presentations at professional conferences and gain strong communication skills.

# STUDENT REFLECTION



# TABLE DISCUSSIONS

## Question 1

**Been involved in research in the past?**

Share your experiences and the learning students gained from the research project.



## Question 2

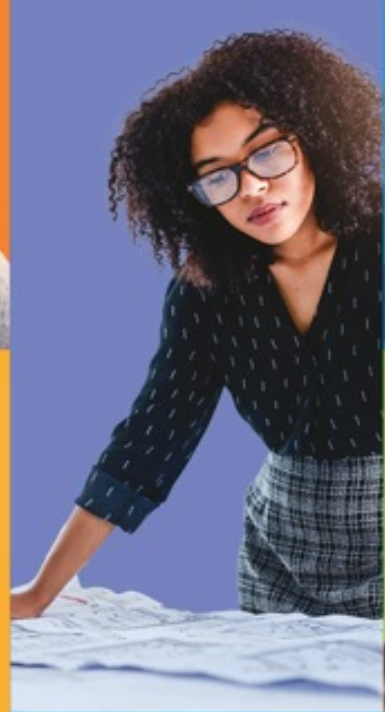
**Exploring research at the college?**

Share what kinds of support are needed to participate in research at the college.

# Feedback

# Thank you!

# Questions?



# CONTACT

## Research & Innovation

**Email:**

[research@georgebrown.ca](mailto:research@georgebrown.ca)

[Click here to go to the Research & Innovation webpage.](#)





**TEACHING &  
LEARNING  
EXCHANGE**



# Conference Agenda

## Conference Agenda

| START    | END      | DESCRIPTION   | LOCATION                     |
|----------|----------|---|------------------------------|
| 8:00 AM  | 8:55 AM  | Registration & Breakfast  | Atrium                       |
| 9:00 AM  | 9:30 AM  | Land Acknowledgement, Hand Drum and Opening Remarks with Dr.Gervan Fearon | SJC 406 with online option   |
| 9:30 AM  | 10:45 AM | Keynote Speaker: Brenda McDermott   | SJC 406 with online option   |
| 10:45 AM | 11:00 AM | Music and Move to Session 1   |                              |
| 11:00 AM | 11:45 AM | Concurrent Session Block 1  | On-campus with online option |
| 11:45 AM | 12:50 AM | Luncheon  |                              |
| 1:00 PM  | 2:00 PM  | Plenary Conversation with John Weigelt                                    | SJC 406 with online option   |
| 2:00 PM  | 2:15 PM  | Music and Move to Session 2   |                              |
| 2:15 PM  | 3:00 PM  | Concurrent Session Block 2  | On-campus with online option |
| 3:00 PM  | 3:30 PM  | Wine & Cheese Social  | Atrium                       |
| 3:30 PM  | 4:00 PM  | President Awards & Concluding Remarks                                     | Atrium                       |

